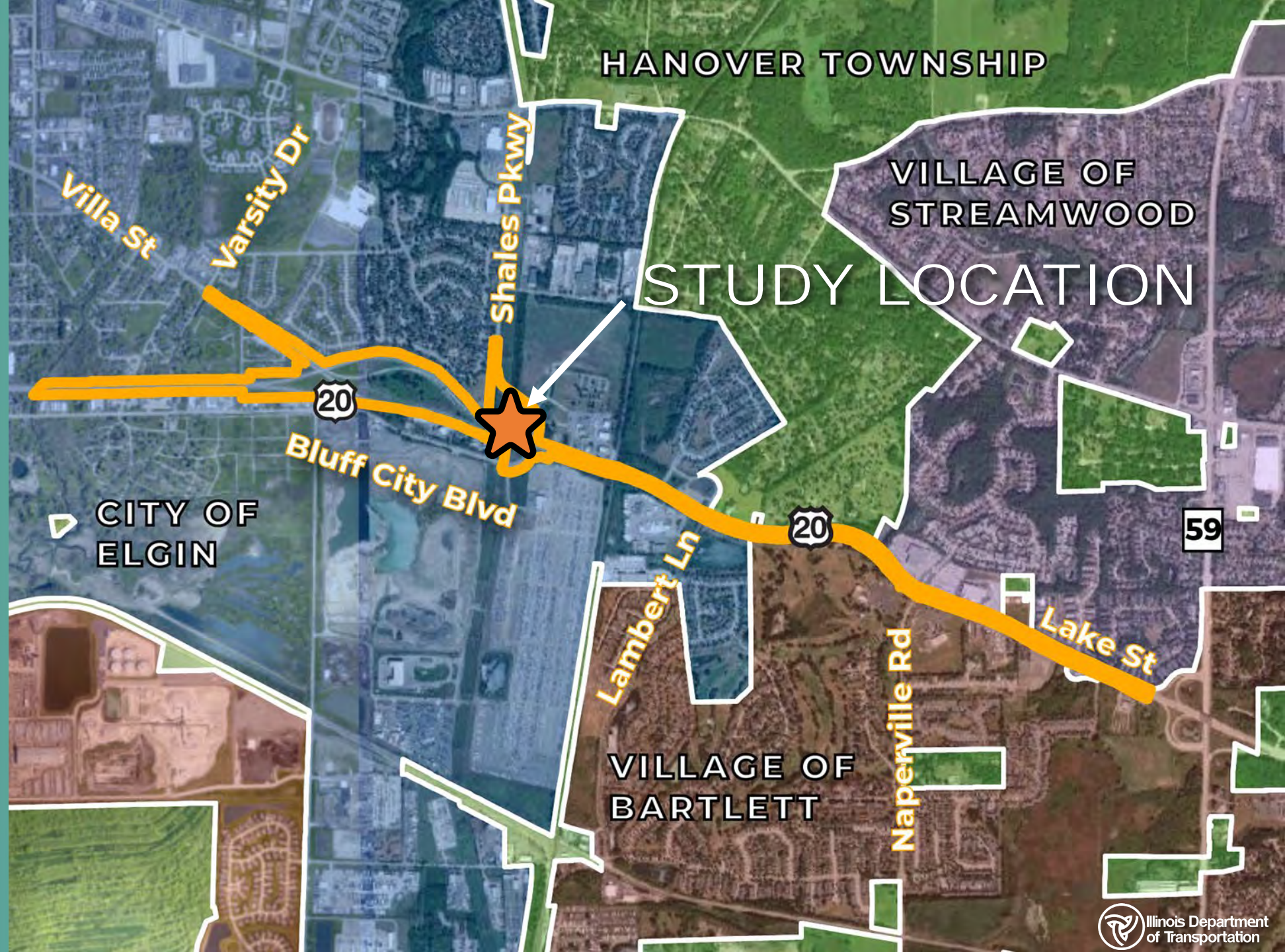


US 20 at Shales Parkway Phase I Engineering Study

*Community Advisory Group #3
April 25, 2023*



US 20 at Shales Parkway



Project Schedule and Next Steps



Next Steps:

- Present Preferred Alternative and impacts during Public Hearing in late fall 2023

Project Development Process

PROJECT PHASES

Phase I

**WE
ARE
HERE**

Preliminary Engineering and Environmental Study

Fully Funded

*Anticipated Completion -
2024*

Phase II

Contract Plan Preparation and Land Acquisition

*Included in FY 2023-2028
Multi-Year Improvement
Program*

*24-36 months to
complete*

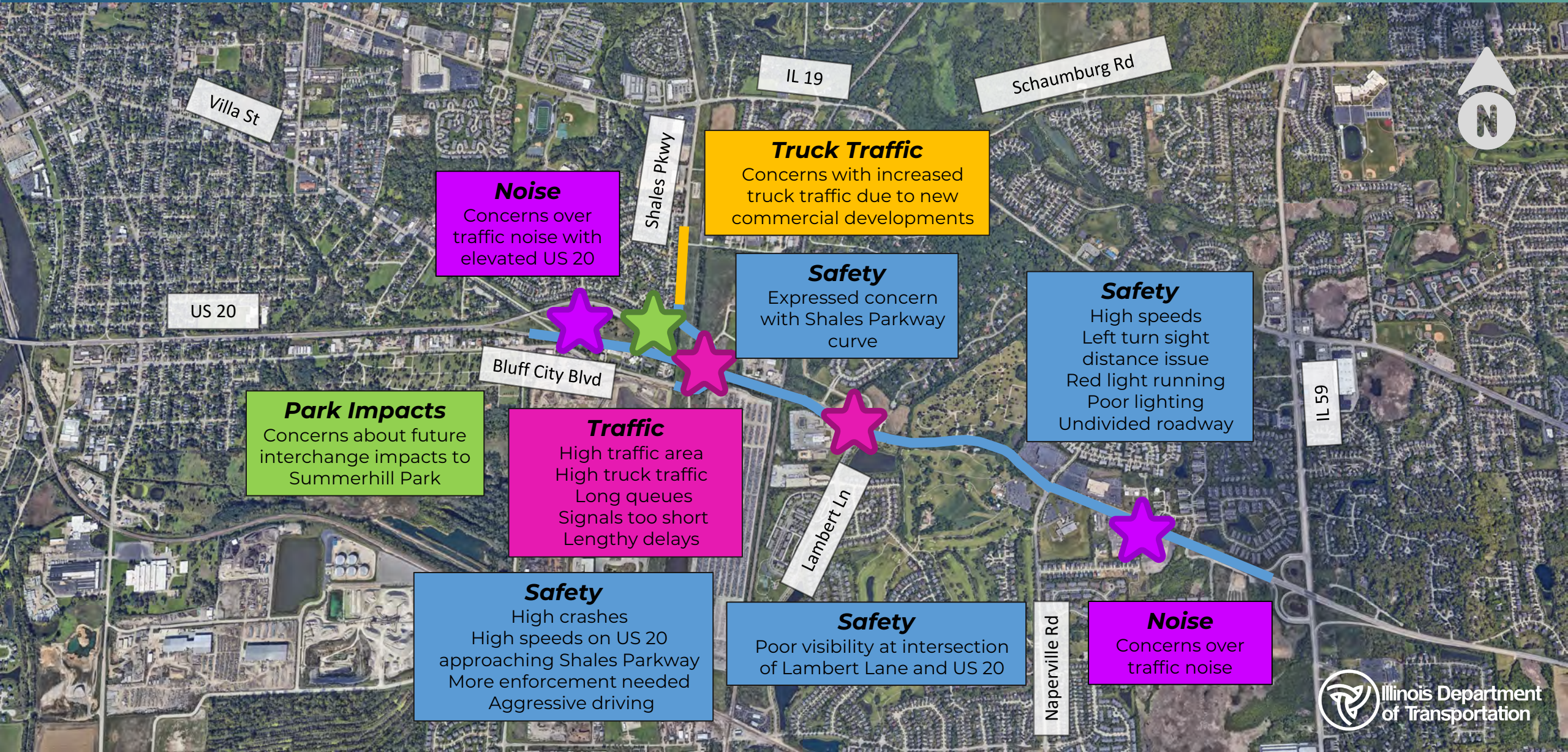
Phase III

Construction

*Included in FY 2023-2028
Multi-Year Improvement
Program*

*24-36 months to
complete*

Public Meeting #2 Comments Summary



Truck Traffic
Concerns with increased truck traffic due to new commercial developments

Noise
Concerns over traffic noise with elevated US 20

Safety
Expressed concern with Shales Parkway curve

Safety
High speeds
Left turn sight distance issue
Red light running
Poor lighting
Undivided roadway

Park Impacts
Concerns about future interchange impacts to Summerhill Park

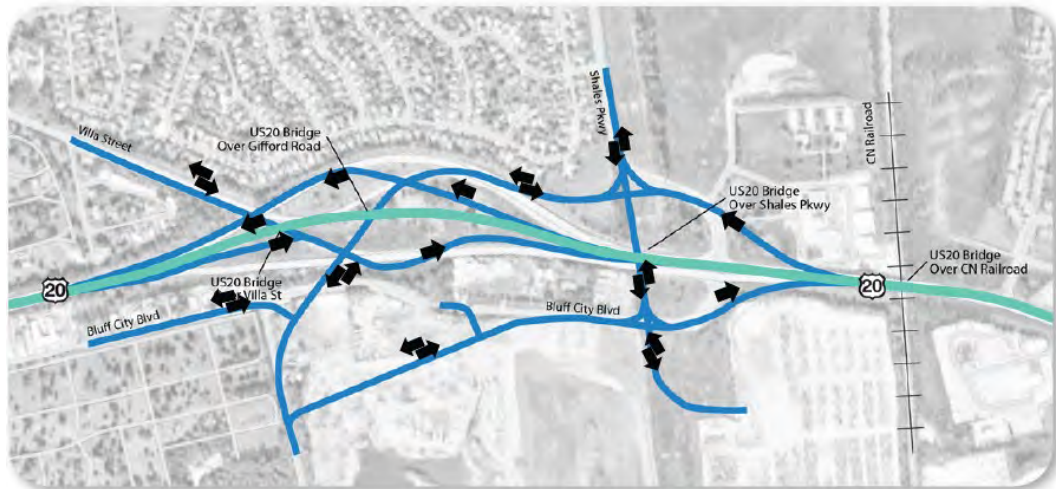
Traffic
High traffic area
High truck traffic
Long queues
Signals too short
Lengthy delays

Safety
High crashes
High speeds on US 20 approaching Shales Parkway
More enforcement needed
Aggressive driving

Safety
Poor visibility at intersection of Lambert Lane and US 20

Noise
Concerns over traffic noise

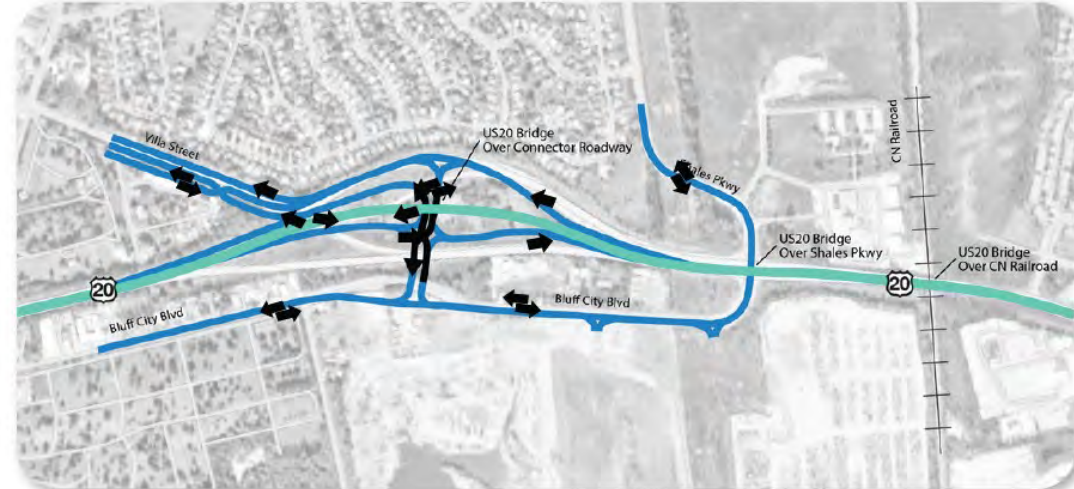
Interchange Alternatives Feedback



Feasibility Study – US 20 w/IL 390 Extension (2017)

Public comments **did not support** this interchange alternative because of the following:

- Complexity
- Higher impacts to Summerhill Park
- Potential Cost

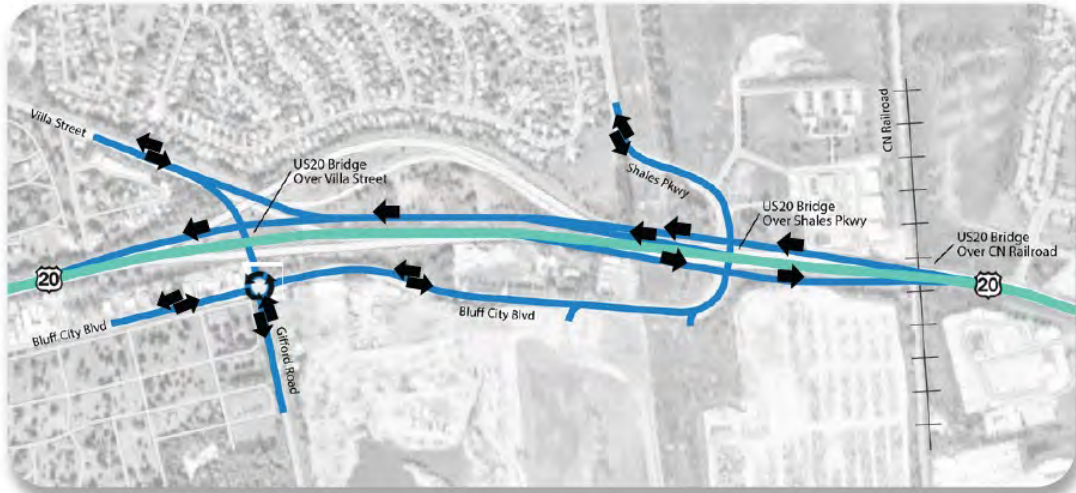


Diverging Diamond Interchange (DDI)

Public comments supported the SPUI and Roundabout options over the DDI interchange alternative because of the following:

- Complexity
- Reduced open space potential
- Increased number of potential intersections

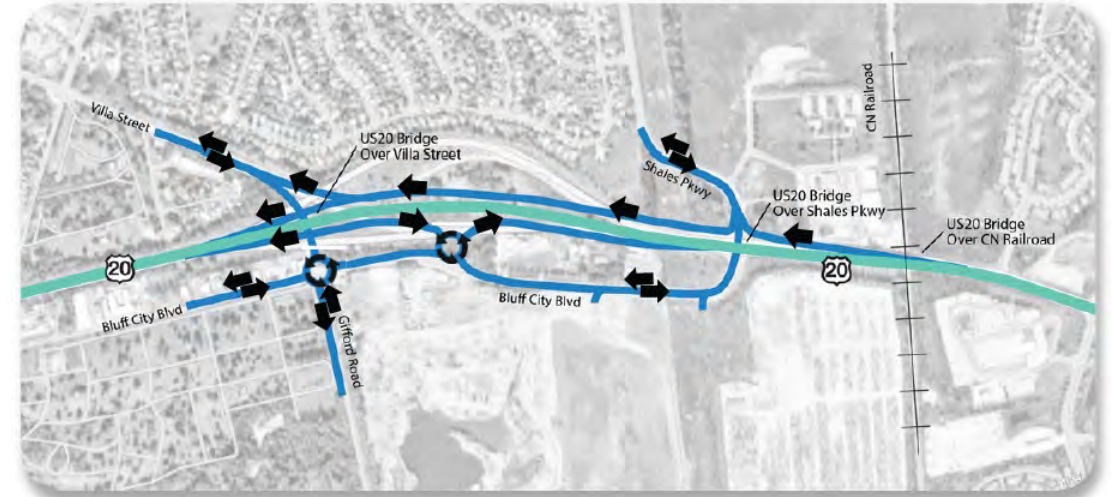
Interchange Alternatives Feedback



Single Point Urban Interchange (SPUI)

Public comments were **in support** of this interchange alternative because of the following:

- Limited number of intersections
- Additional roadway medians/barriers
- Minimal impact to Summerhill Park



Roundabout West of Shales Parkway

Public comments were **in support** of this interchange alternative because of the following:

- Limited number of intersections
- Minimal impact to Summerhill Park
- Increased open space potential

Interchange Alternatives Analysis

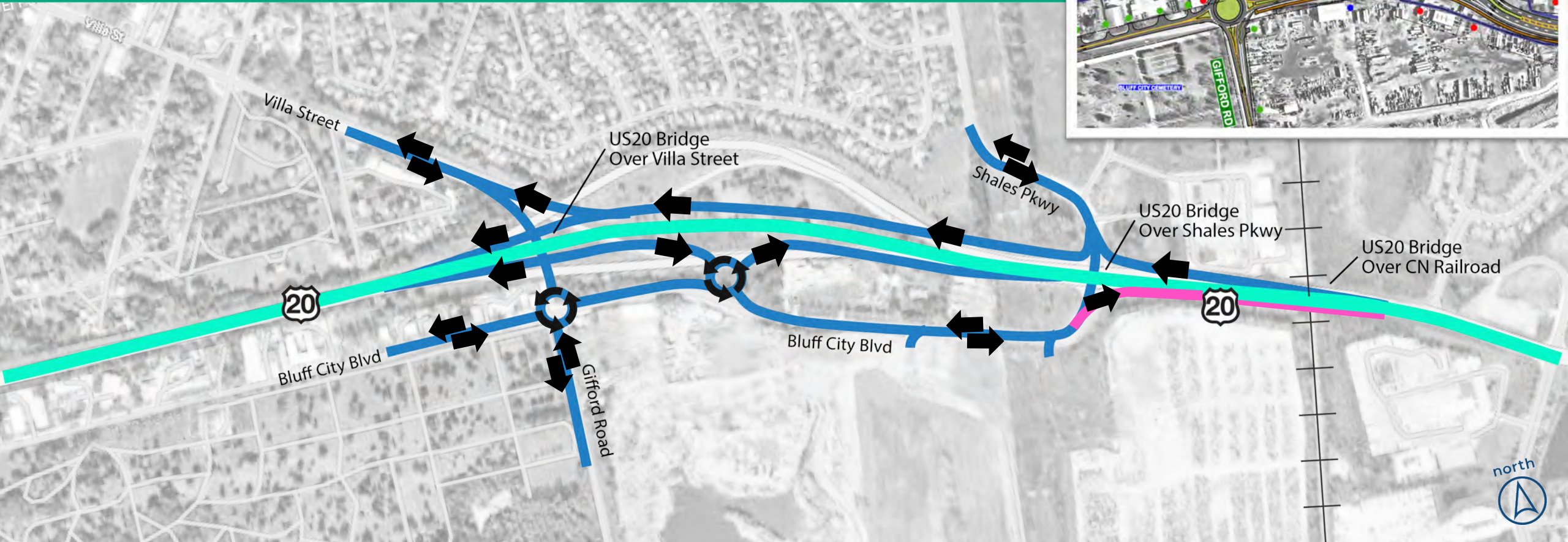
	Category	Unit of Measure	SPUI	Roundabout
Purpose and Need Evaluation	Safety Improvements	Scale	Better	Best
	Traffic Operations	Scale	Better	Best
	Accommodates Bike and Pedestrian Facilities	Scale	Better	Best
	Does this meet the City of Elgin Comprehensive Plan?	Yes/No	Yes	Yes
Impact Evaluation	Environmental Resources			
	Impervious Pavement Area	Acres	34.68	34.01
	Impervious Area Discharging to Fen	Acres	19.48	18.66
	Wetland Impacts	Acres	0	0
	Floodplain Impacts	Acres	0	0
	Anticipated Summerhill Park Impacts	Acres	0.24	0.24
	Socio-Economic Impacts			
	Right-of-Way Acquisition	Acres	4.63	4.96
	Villa Street Access	Yes/No	Yes	Yes
	Cost			
	Overall Cost Range (Millions)	Dollars	\$120-\$125M	\$110-\$115 M

Relative Potential Impacts



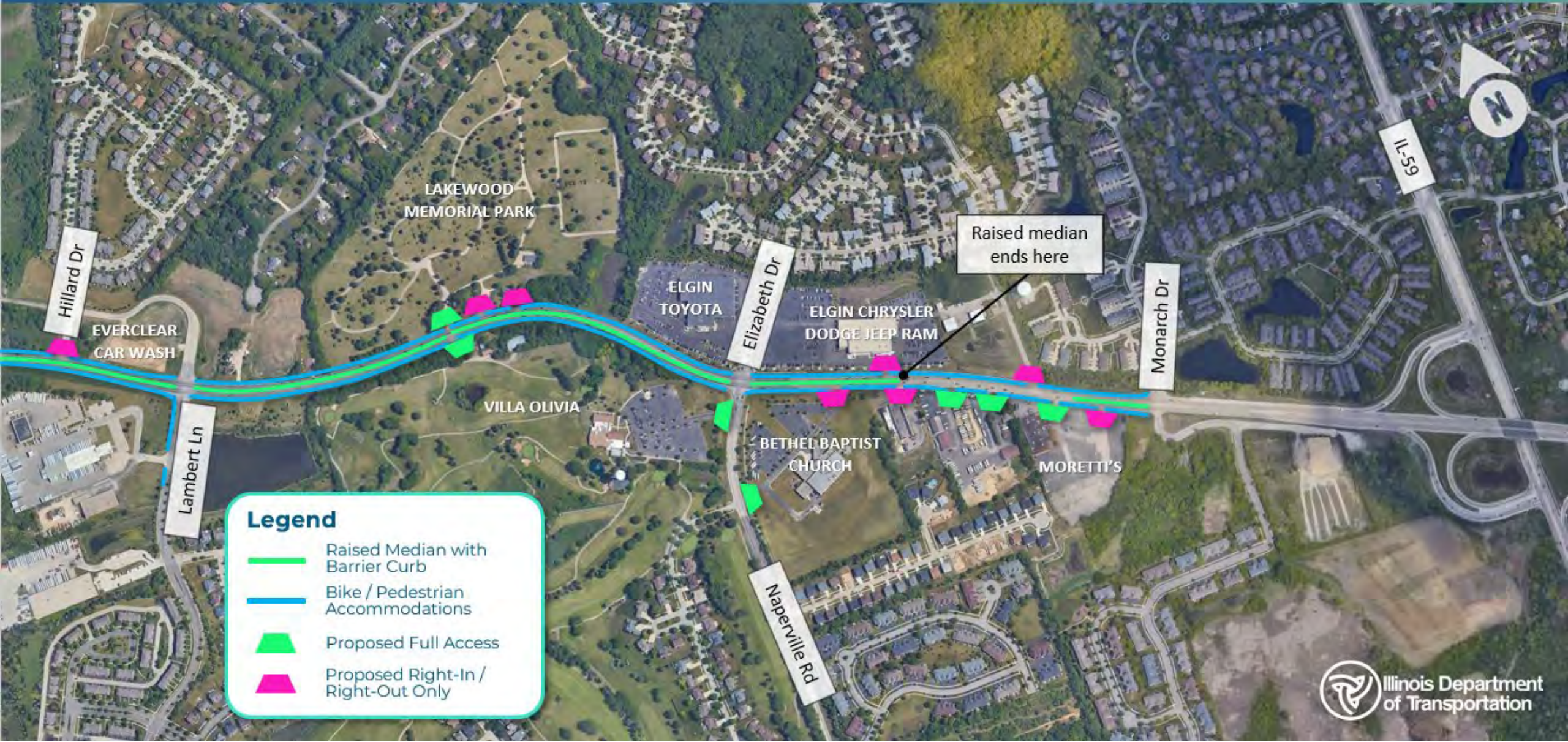
Preferred Alternative

Roundabout West of Shales Parkway



 New

Median and Intersection Safety Improvements



Noise Analysis



Noise Analysis and Abatement Process

Step 1

Noise
Monitoring

Step 2

Traffic Noise
Model

Step 3

Abatement
Evaluation

Step 4

Solicit
Viewpoints of
Benefitted
Receptors

Project Schedule and Next Steps



Next Steps:

- Present Preferred Alternative and impacts during Public Hearing in late fall 2023

THANK YOU!

Website: US20atShalesStudy.org

Email: Info@US20atShalesStudy.org



Illinois Department of Transportation