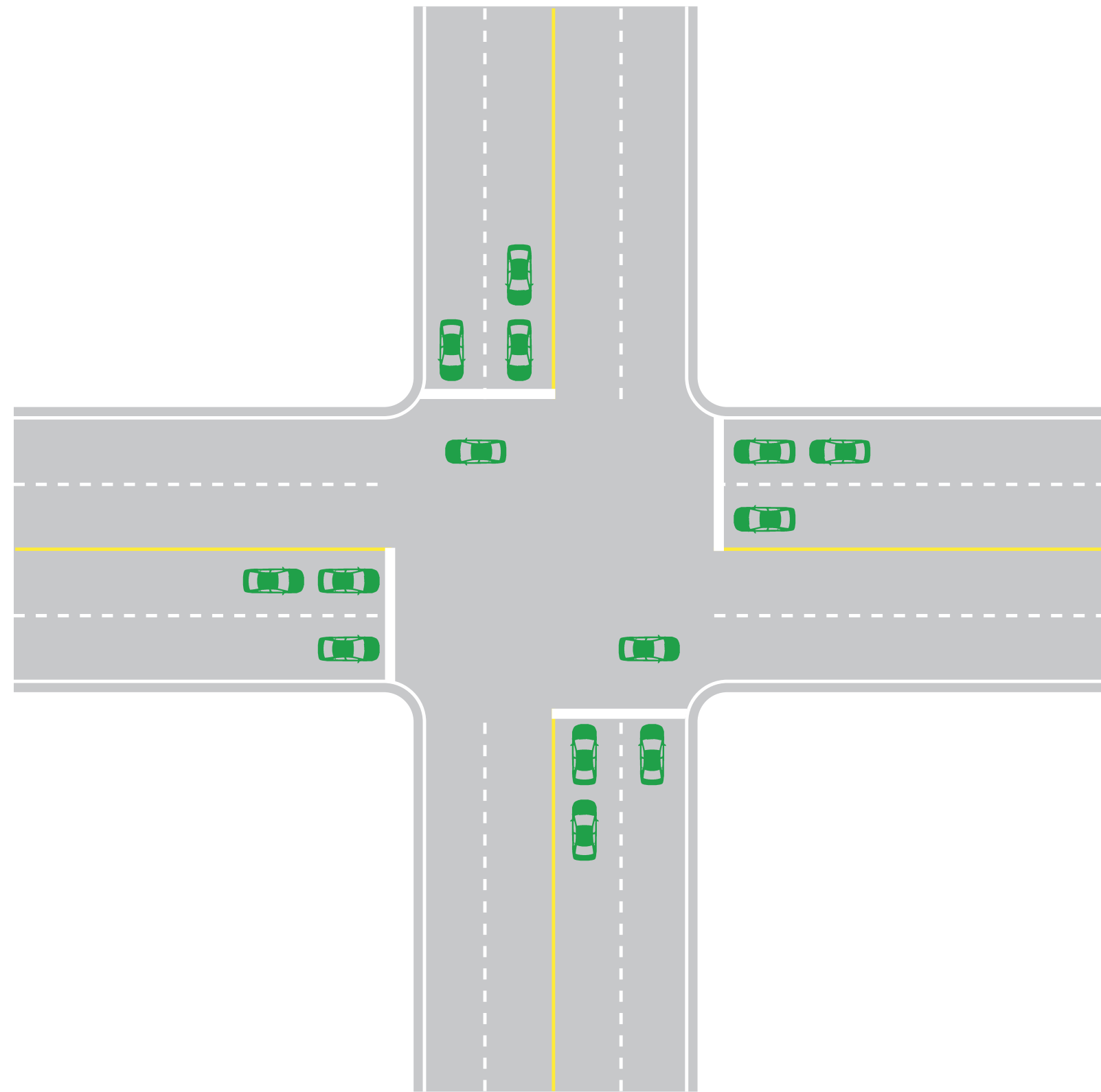


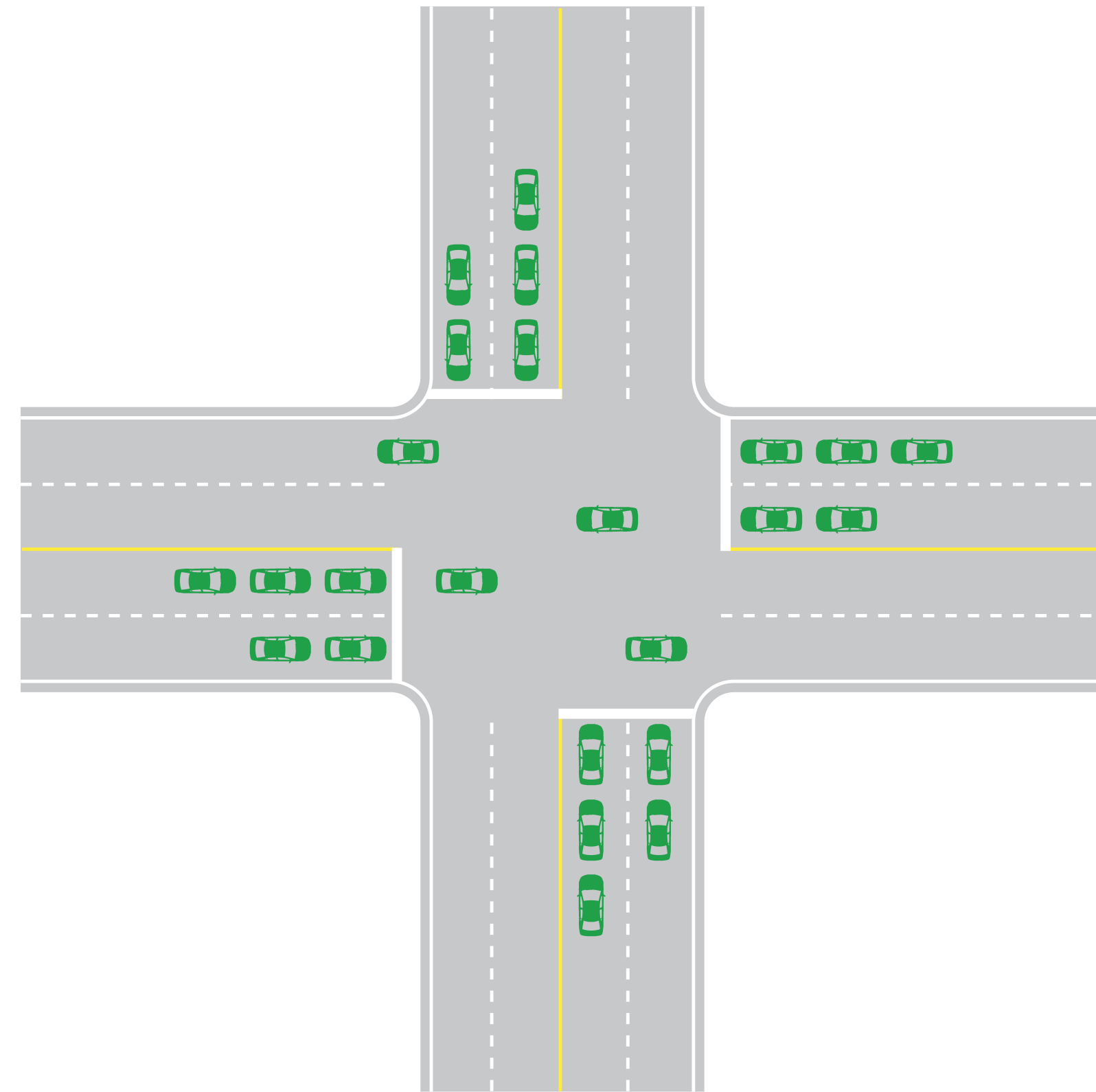
Level of Service (LOS) Illustration

Level of Service (LOS) represents a qualitative assessment of a road's operating conditions, generally indicated on a scale from A to F, with free flow rated LOS A and heavy congestion rated LOS F.



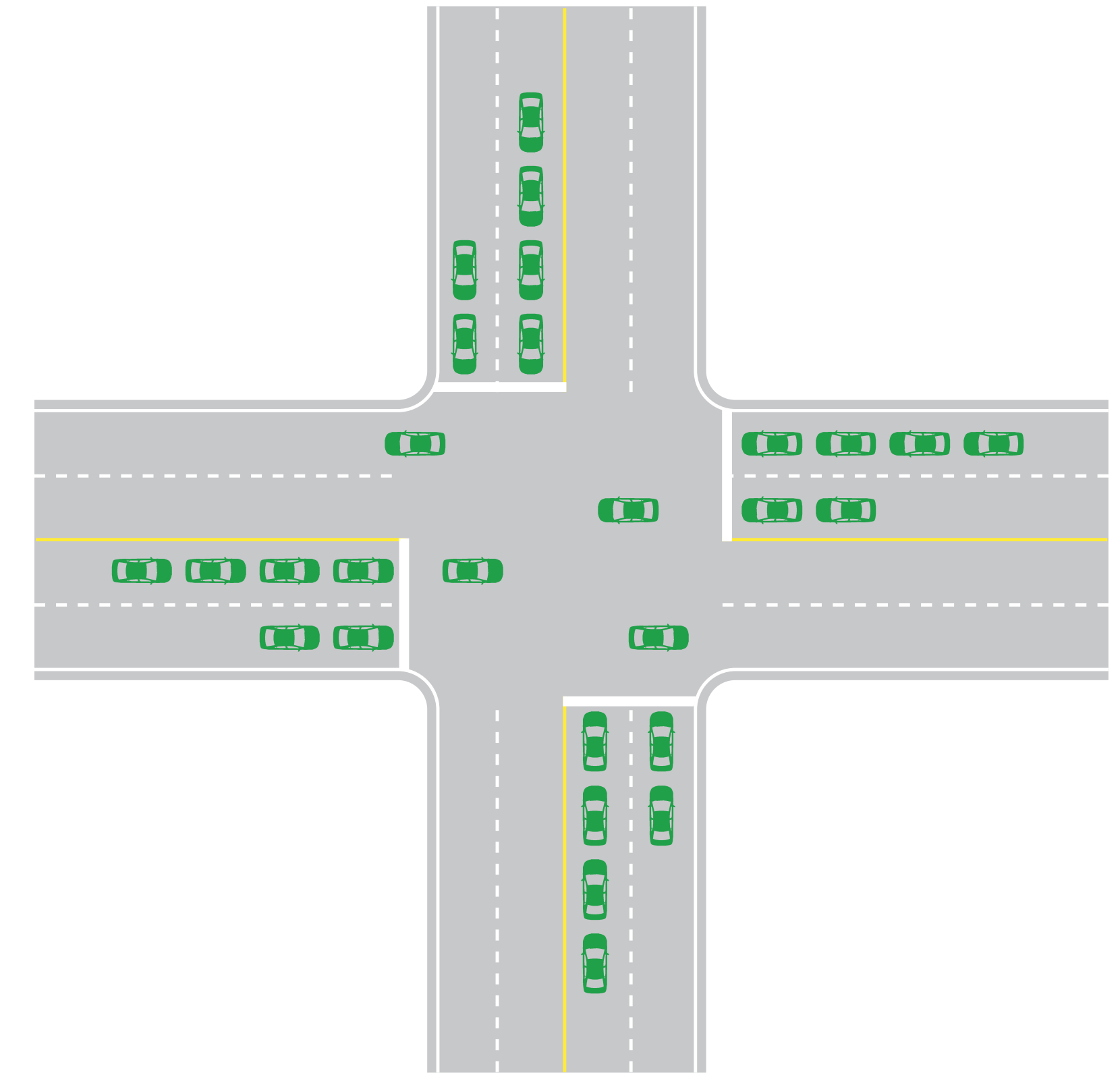
LOS A

Intersection approaches appear quite open and all movements are easily made. Average vehicle delays are **less than 10 seconds**.



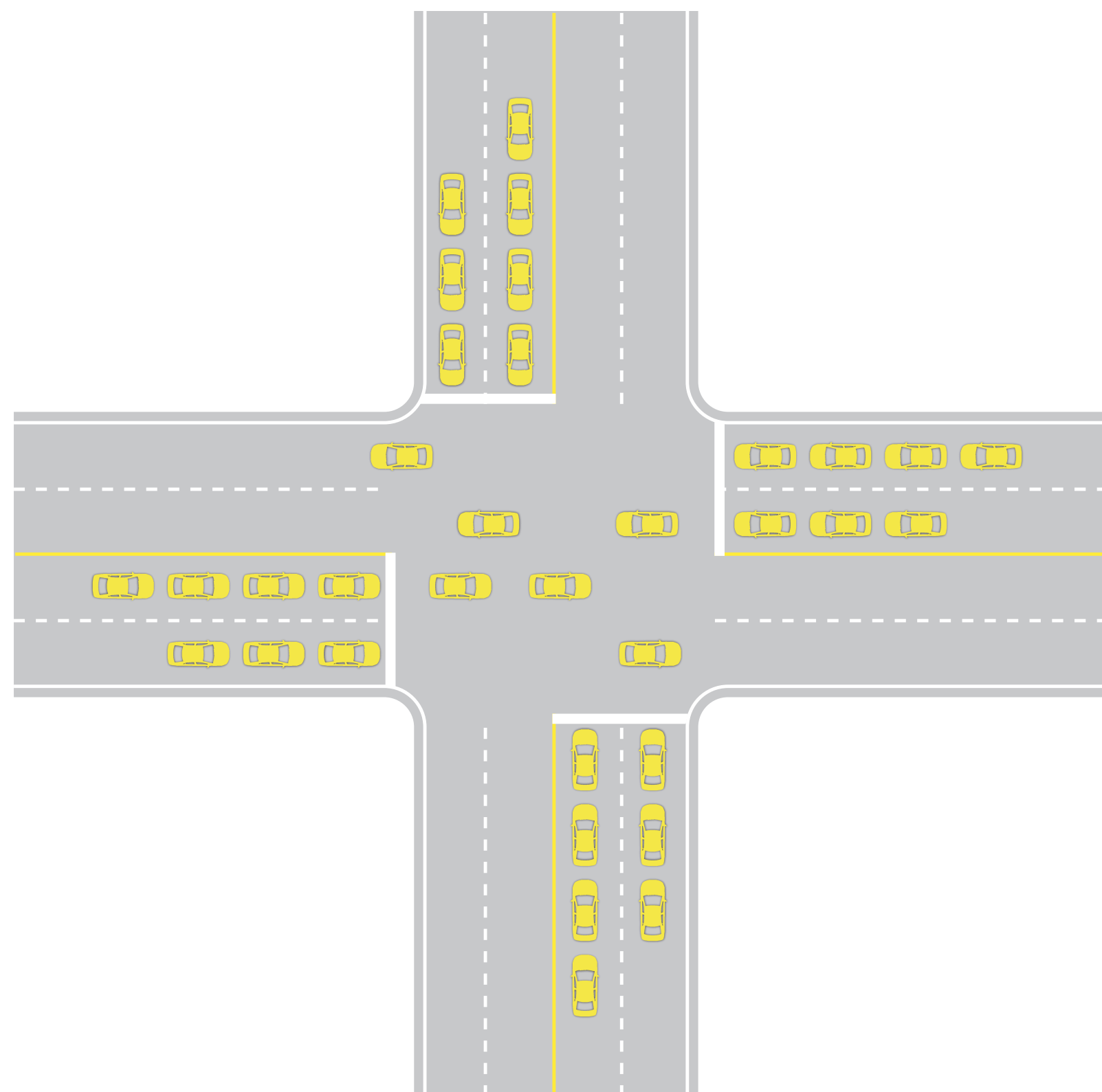
LOS B

Stable operation. Average vehicle delays are **10 to 20 seconds**.



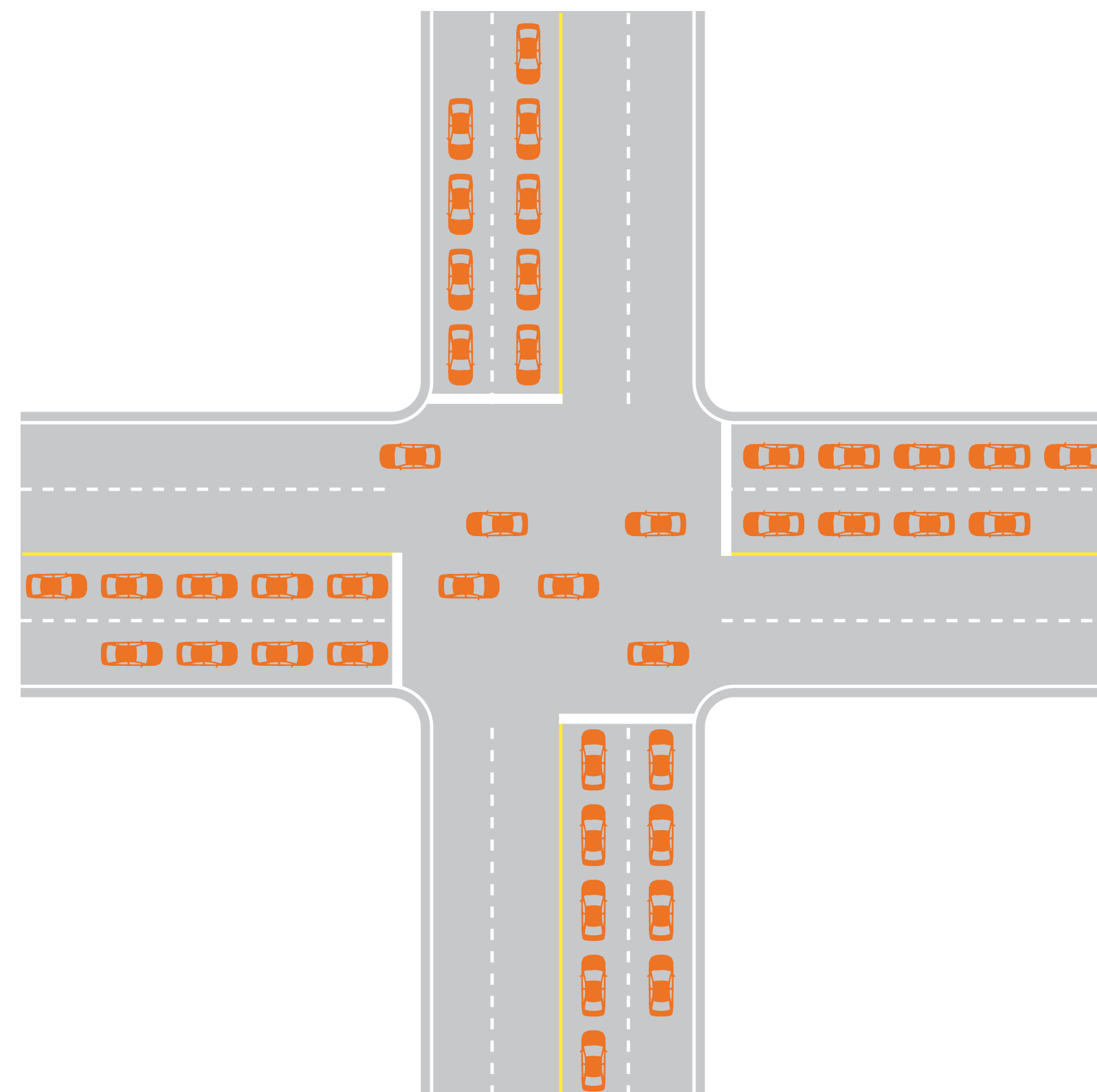
LOS C

Periodic backups where most drivers begin to feel somewhat restricted. Average vehicle delays are **20 to 35 seconds**.



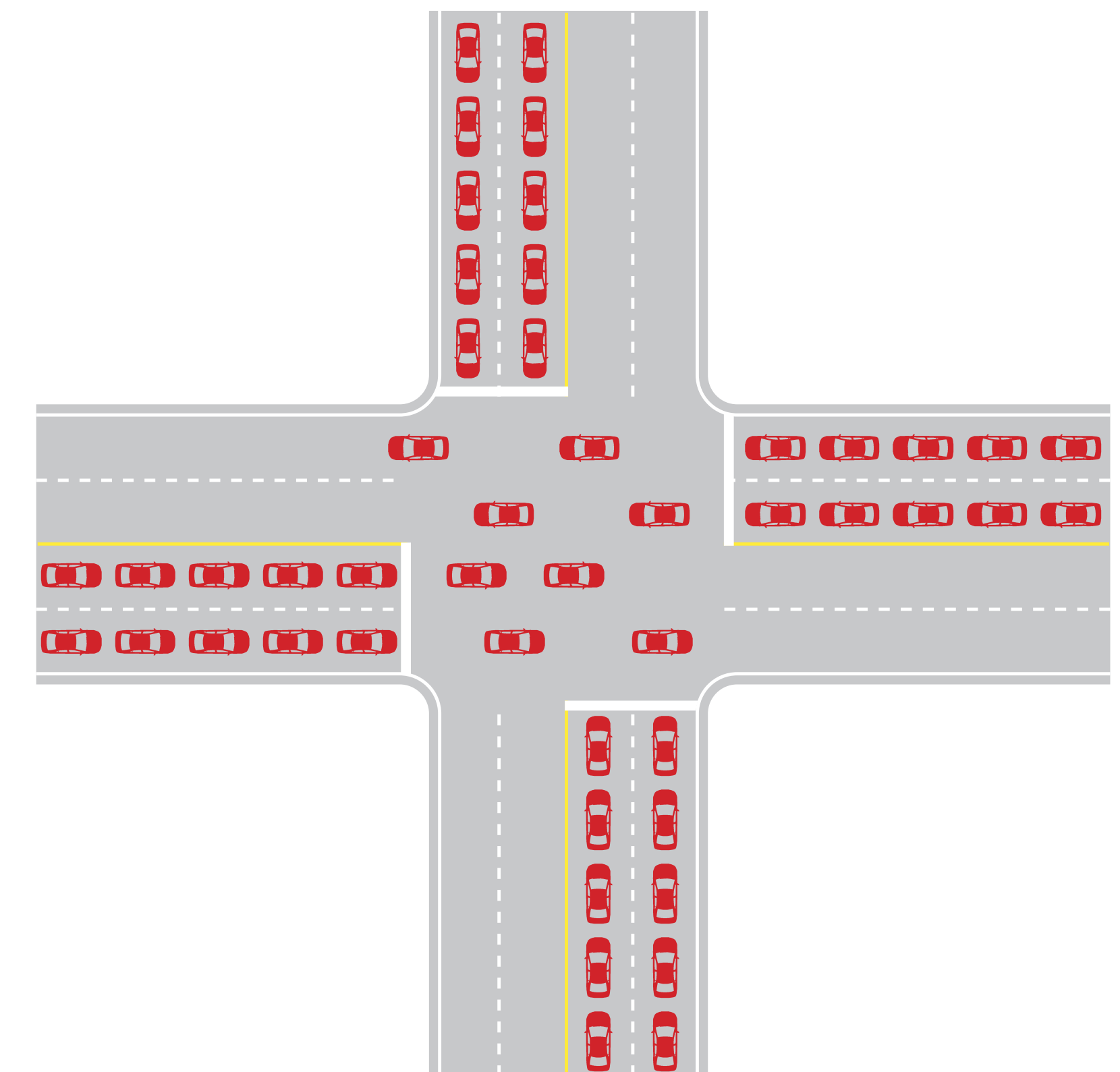
LOS D

Delays to approaching vehicles may be substantial during short periods, but excessive backups are negligible. Average vehicle delays are **35 to 55 seconds**.



LOS E

Maximum capacity of the intersection. Average vehicle delays are **55 to 80 seconds**.



LOS F

Jammed conditions where the intersection is over capacity. Average delays **exceed 80 seconds**.

Delay: Defined as the additional travel time beyond the free flow condition experienced by the driver.